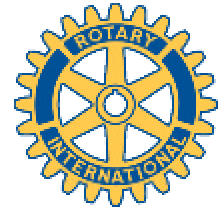


# Rotary Park



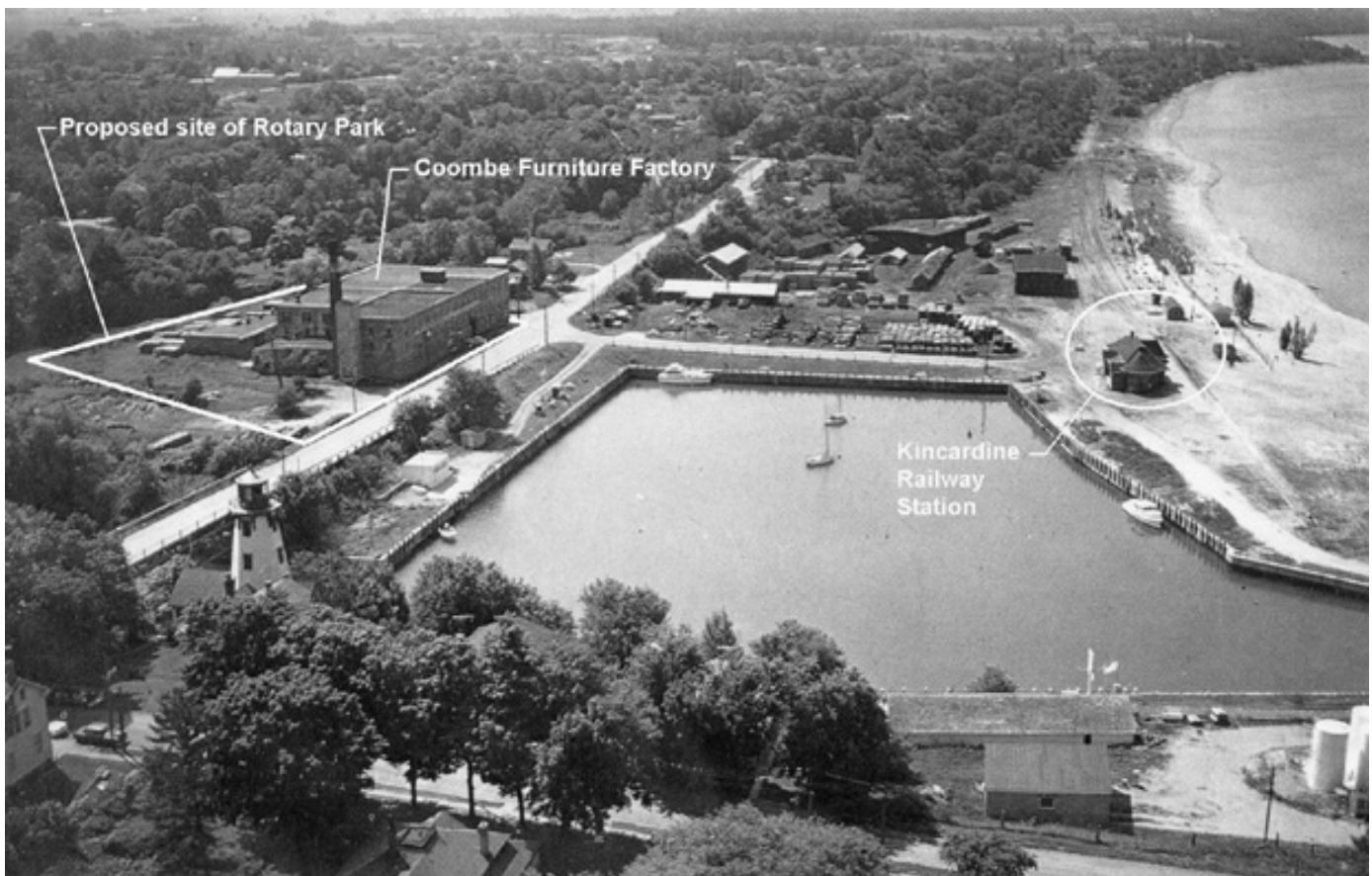
ROTARY CLUB OF KINCARDINE

## The History of Rotary Park

This is a brief history of the development of Rotary Park which was designed, constructed and maintained by the members of the Rotary Club of Kincardine.

The Park was paid for by the citizens in the community through fundraising such as Bingo and Auctions etc. and maintained by volunteers who are members of the Rotary

Club or Friends of Rotary. The sight is located on Huron Terrace, overlooking Kincardine harbour and backs onto the Saugeen River and was conceived by Rotarians in the



The proposed Park site taken in circa 1971

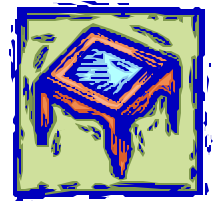
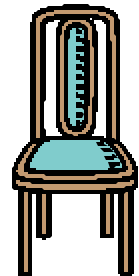
# The History of Rotary Park



The site of "Coombe Furniture Factory Company Limited" is on the left of the photos.



F.E. Coombe Furniture Factory 1923



James B. Watson and Frank E. Coombe joined forces in 1903 to form Watson and Coombe Furniture. The company name was changed to F.E. Coombe Company when J.B. Watson sold his interest and Howard Magwood and George Davidson joined the company. After the death of Frank I. Coombe in 1929, the name changed to Coombe Furniture Factory Company Limited in 1963.

During peak times, there were 75 to 80 employees at the company.

The F.E. Coombe Company made high quality wooden period furniture and upholstered furniture. Most of the wood was imported from the United States, Africa and the West Indies. Marble for tabletops was at one time imported from Spain. This Spanish marble was very attractive but often arrived broken so Portu-

guese Marble was imported. Canadian elm and birch were used for the frames of upholstered furniture.

The furniture made at the Coombe factory was known worldwide. It was used to furnish the Canadian Government House in England, the MPP's chairs in Parliament and the Queen's suite when she visited Charlottetown.

In 1972, Coombe Furniture closed. The building was demolished in May 1973 and the site was left vacant.



# The History of Rotary Park

## KINCARDINE RAILWAY STATION BUILT IN 1903



The rail line into Kincardine was established in 1872 but in October 1970 Canadian National closed the Kincardine Rail Line and the Kincardine Railway Station was given to the Town of Kincardine. (It is shown located on the right of picture 1)

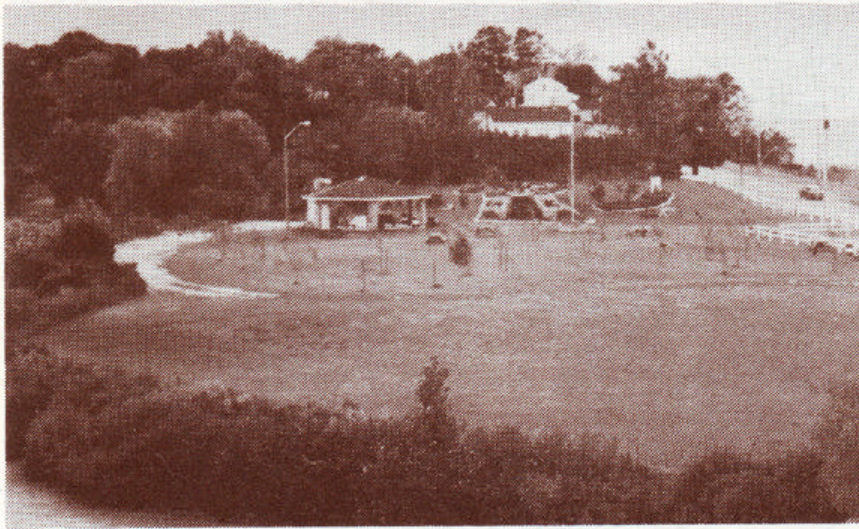


The Station was declared a historical site in 1974 but was destroyed by fire in 1979, after being boarded up. The Rotary Club of Kincardine demolished the burnt down station in circa 1980 and the bricks were saved and used to build a concession booth on the Park site.



# The History of Rotary Park

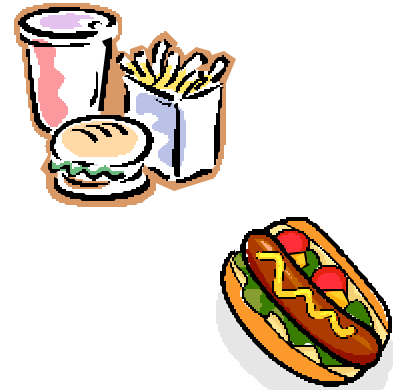
## NEWS PAPER CLIP 1983



**Rotary Park today on the site of Coombe's Factory, and before that boat building industries.**

Courtesy of S. Murphy — 1983

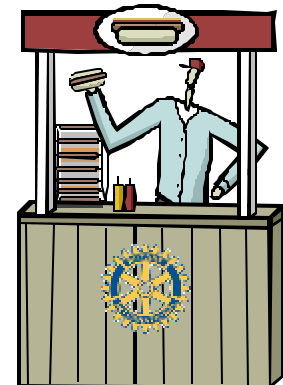
The concession booth , flag pole and fountain were all build in 1983 by Rotarians from the Rotary Club of Kin-cardine.



The concession booth pictured in 2005 was built with the reclaimed bricks from the Railway Station and the fountain and the flagpole were built at the same time. In July 1984, the Lieutenant Governor of Ontario opened Rotary Park. The Club Members served a luncheon to all the dignitaries after the ceremony.



The Flag Pole and Fountain



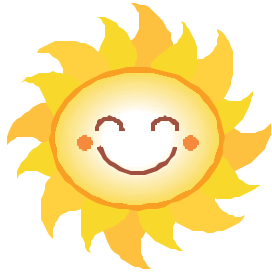


# The History of Rotary Park

THE PARK GATE WAS ERECTED IN 1998



The fountain with gardens around and all the flowerbeds around the Flagpole are planted and maintained by Rotarians.



In 2005, Rotarians built the Picnic Shelter as part of the Rotary Centennial Project. This shelter is well used and provides shelter from the sun as well as the rain.



The Park has changed many times over the years to improve and make it wheelchair accessible. In 2005 the landscaping and wheelchair access to the outlook at the top of the fountain was done and new flower beds were added and in 2007 the "Rotary Park" name was planted in box-wood in the box to the right of the fountain.





# The History of Rotary Park

THE PARK OVERLOOKS THE KINCARDINE HARBOUR.



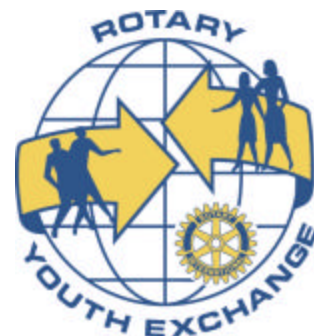
Rotarians plant flowers every year around the fountain and flagpole



## ROTARY INTERNATIONAL EXCHANGE STUDENTS PLAQUE

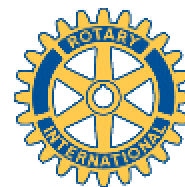


The Rotary Club also planted trees dedicated to Youth Exchange Students but because of space limitations a plaque commemorating the students who came to Kincardine was added in 2005. Every year an Exchange Student sponsored by the Rotary Club comes to stay in Kincardine on the Exchange Program, when they leave their name is added to the plaque. The Rotary Club of Kincardine has sponsored Exchange students since 1985 from all over the world.





# The History of Rotary Park



Service Above Self

ROTARY CLUB OF KINCARDINE

The Rotary Club also sponsors a Seniors Picnic and holds Fellowship Picnics and fundraising events in the Park. It is also a very popular place for weddings and many wedding photos are taken around the fountain and gardens.

The Rotary Club of Kincardine is very proud of its contribution to the Community and will continue to maintain and improve Rotary Park of Memories in years to come.

A fish hatchery shares the site with Rotary Park and was built at a later date.

The Rotary Club welcomes people to use the Park for Weddings, Family reunions and picnics and people are encouraged to donate a park bench in memory of a loved one.

**For more information on the Park contact the Kincardine Rotary Club on the website.**

